

AVAILABLE

5409 Lumley Rd. Suites 101-104 Durham, NC 27703



FOR INFORMATION OR TO ARRANGE A SHOWING CONTACT:

W. MICHAEL LEWIS, SIOR, CCIM
(919) 828-8800
mike@thelewisgroup.biz

GEORGE YOUNG
(919) 828-8800
george@thelewisgroup.biz

CORFAC
International



No warranty or representation, express or implied, is made to the accuracy of the information contained herein; all information is subject to errors, omissions, change of price, change of financing, prior lease or sales, withdrawal without notice, conditions affecting this and any other listing conditions. All information contained herein is subject to your independent verification. The Lewis Group, LLC assumes no liability for any inaccuracy contained herein.



AVAILABLE

5409 Lumley Rd. Suites 101-104 Durham,
NC 27703

BUILDING SIZE

OFFICE SPACE: 1875sf
WAREHOUSE SPACE: 5875sf
TOTAL: 7750sf

CONSTRUCTION

CLEAR HEIGHT: 14' – 17'
YEAR CONSTRUCTED: 2005
FACADE: Brick and Glass
INTERIOR WALLS: Warehouse Insulated

TRANSPORTATION/PARKING

DOCK HIGH DOORS: 4
ONSITE PARKING: 20 Spaces
MAJOR HIGHWAY ACCESS:
3/4 mile from Highway 70
2.5 miles to Interstate 540
2.8 miles to Durham Freeway
4.5 miles to Interstate 40

COMMENTS

Located in Brassfield Business Park., with easy access from RDU International Airport, Interstate 40, and Interstate 540.
Unique opportunity to purchase four (4) contiguous units with a covered dock.
Only building in Brassfield with a covered dock.

MECHANICAL

POWER: Four Individual Panels
NATURAL GAS: Yes
HEAT: Electric/Gas
SPRINKLER SYSTEM: No

UTILITIES/ZONING

WATER: City of Durham
SEWER: City of Durham
ZONING: Industrial

COSTS

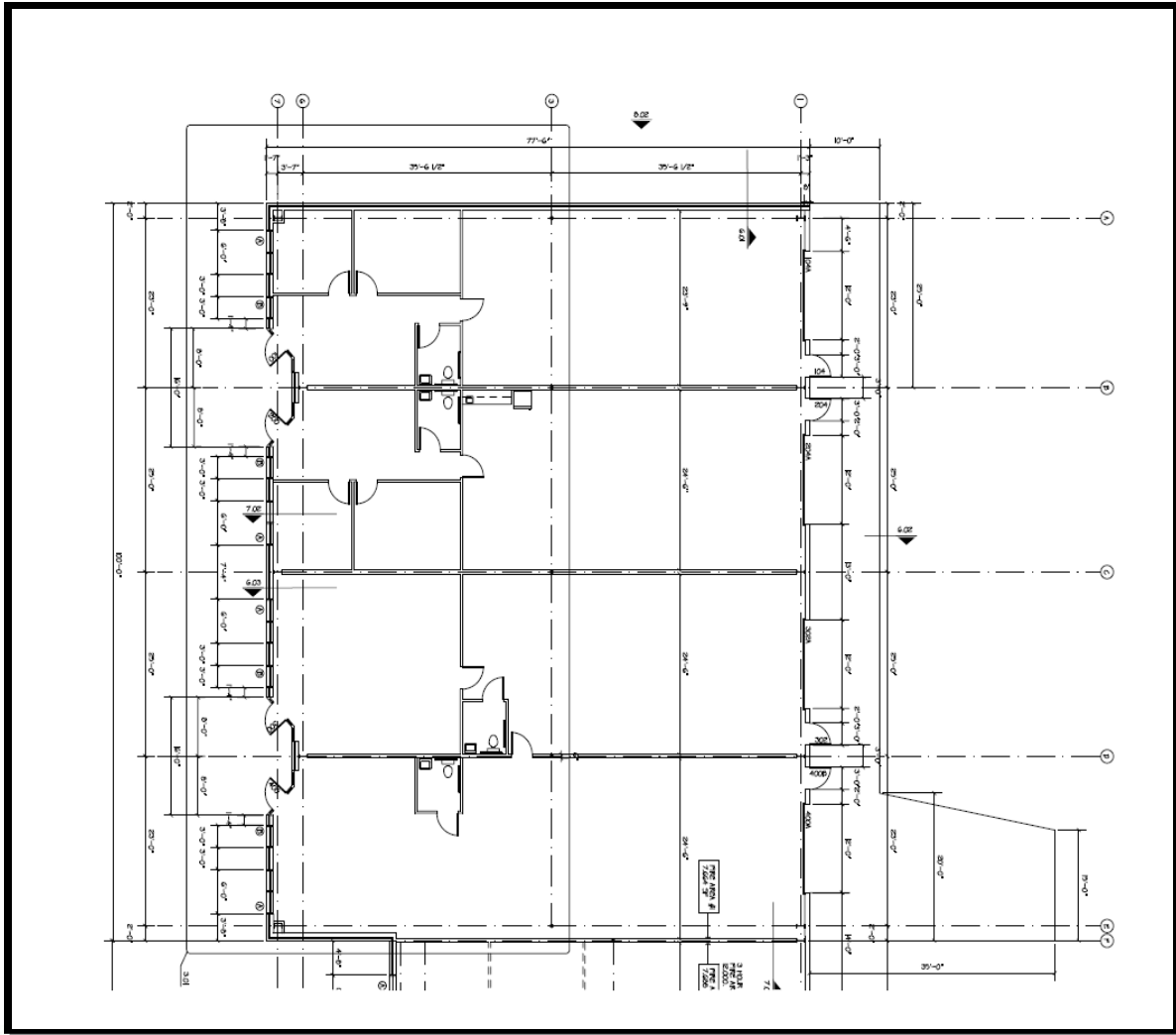
SALES PRICE: \$869,000
LEASE RATE: Negotiable

AVAILABILITY:

DATE: Immediate

AVAILABLE

5409 Lumley Rd. Suites 101-104 Durham, NC 27703



Floor Plan